

PUBLIC TRANSPORT CONNECTION

From Linz main station - Bus 27 (direction Fernheizkraftwerk) to the stop "Gallanderstraße", takes 25 minutes.

Further information / timetable information: <https://services.linzag.at/efa>



googlemaps

DIRECTIONS

From SOUTH A1 to A7 direction Freistadt / Prag
or from the NORTH A7 exit Hafenstrasse:

at the traffic lights turn left, after 50 m left, access to the parking lot left again.

HOTEL

Closest hotel:

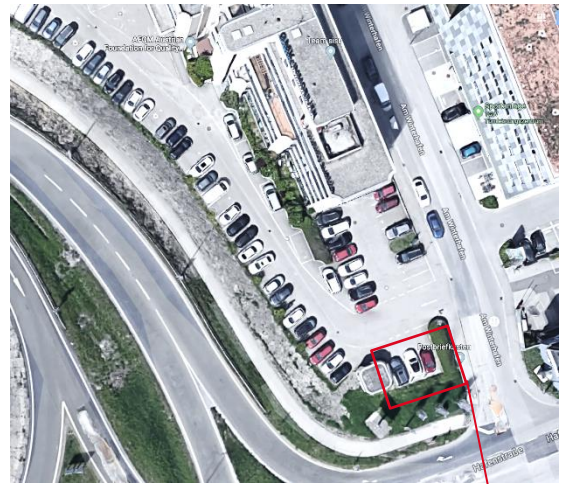
Hotel Donauwelle (formerly Steigenberger)
TWH Trans World Hotels Austria GmbH
Am Winterhafen 13
A-4020 Linz
Tel.: +43 732 78 99 0

LUNCH

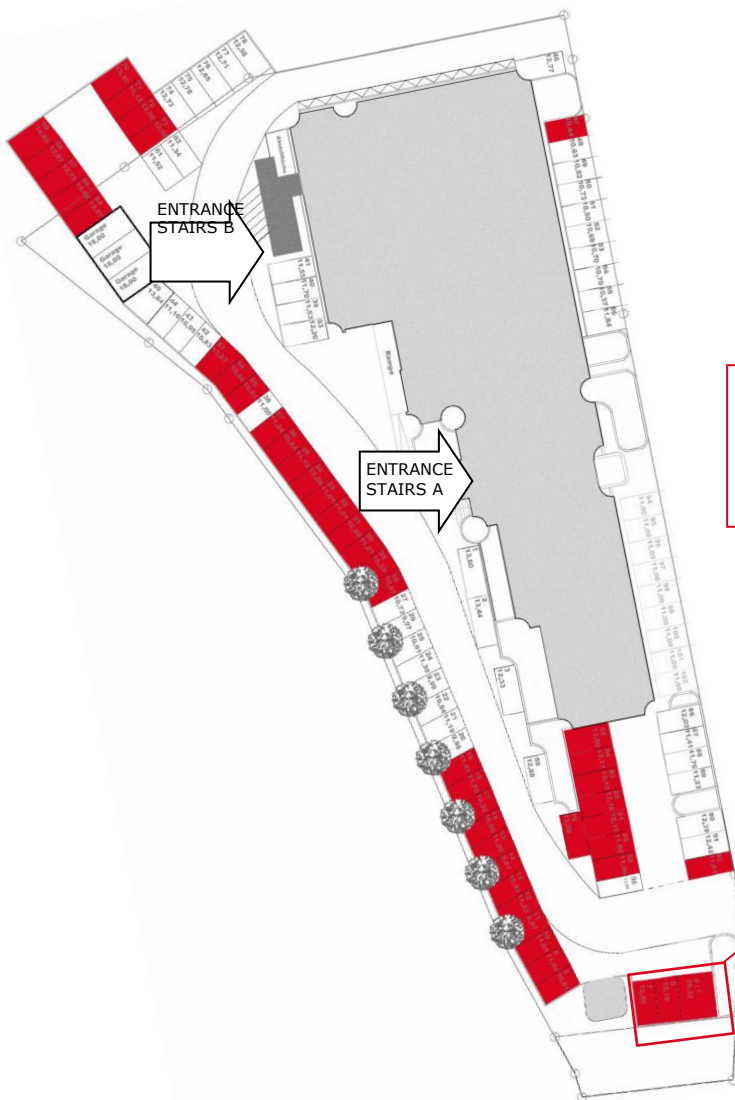
Lunch is usually offered in a hotel outside the training center (about 5 minutes walking distance). We kindly ask for appropriate clothing in case of bad weather conditions. Umbrellas can be borrowed at the training center.

PARKING

Please only use the **parking spaces** marked "Quality Austria" (otherwise there is a risk of being towed). We can provide some free parking spaces, otherwise we kindly ask you to use the underground car park at Hotel Donauwelle. These parking spaces are chargeable. **qualityaustria** customers benefit from special parking conditions. For more information please contact the hotel at +43 732 78 99 0.



googlemaps



Three EV Charging Stations are available, for use during the training period. Please inform the colleagues of the seminar support team.

Red marked areas = **qualityaustria** parking spaces